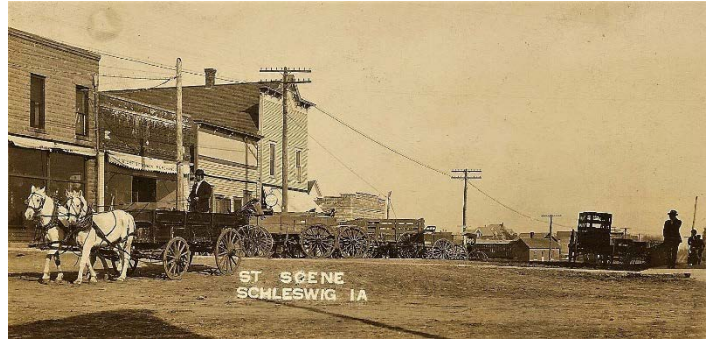
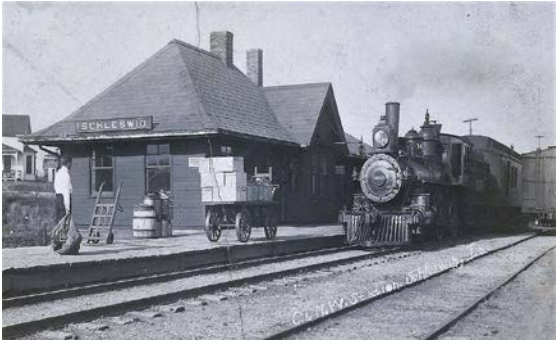


# Schleswig Community Guide



• Designed by [TownMapsUSA.com](http://TownMapsUSA.com)

Schleswig, Iowa is 12 miles north of Denison and 14 miles south of Ida Grove. The agricultural community was settled by German immigrants in 1899. The German heritage in Schleswig can be seen in the designs of the buildings on Main Street, through the music and attire of the Schleswig German Band, and as well as in the work ethic and friendly nature of Schleswig residents.



In welcoming newcomers, we want to share about what makes our small community work, and our traditions and customs. This booklet highlights the organizations, committees, and people that are an integral part of our friendly and active community.

Additions, changes, or edits to this guide are welcomed. Group chairmen can emailing Crossroads of Crawford County at [info@CrossroadsofCrawfordCounty.org](mailto:info@CrossroadsofCrawfordCounty.org).

Updates will be made regularly, and copies will be made available for a fee, and printable from the city website.



---

A special Thank You to:

B.J. Kamagaki (Country Mouse Imaging)

Lila Bubke

Gail Hatfield

for all of their help with this project.

We could not have done it without them

---



# Community Clubs & Organizations

## **Schleswig Business Club** (Volunteer Opportunity)

This group sponsors and hosts three traditional events each year:

*Easter Egg Hunt*—the Saturday before Easter, the Easter Bunny comes for the kids to see and take pictures with and enjoy the egg hunt. Time can vary year to year, but will be posted in local businesses

*Santa Claus Days*—Santa comes into Schleswig early each December. It is typically the first Saturday morning of December, but dates will be posted at local businesses.

*Clean up Day*—Engaging Schleswig middle school students with community action at public facilities and for the elderly or handicapped. Duties typically involve yard work such as raking and picking up sticks.



## **Schleswig Community Club** (Volunteer Opportunity)

This is a group of men in the Schleswig community who gather the 2<sup>nd</sup> Thursday of each month to plan the Schleswig Calf Show Day town celebration (held the second weekend in September each year. Any adult men in the community are welcome to join. Membership is \$35 per year, with \$10 of that going to the carnival costs. Each December, the Community Club holds a membership drive with Bank Iowa and United Bank Iowa of Schleswig donating a prime rib & ham dinner.



## **Schleswig Community Chest** (Donor Opportunity)

This is a collection of monies from the community for community good. The Annual Community Chest Drive runs from November 1<sup>st</sup> through the 15<sup>th</sup> each year. A block captain is selected to stop at residents' homes to ask for donations. The donations are then distributed to Local and National worthwhile causes. If you happen to be missed you may drop off your donation at Bank Iowa by November 20<sup>th</sup>.

Last year the donations were distributed to the following recipients:

Alzheimer Disease, American Cancer Society, American Diabetes Foundation, American Lung Association, American Red Cross, Iowa Children & Family Services, Crawford County Heart Fund, Crawford Co Easter Seals, Lutheran Services in Iowa, Mid-American Council of Boy Scouts of America, Morgan Cemetery Road Fund, Relay for Life, Salvation Army, Sioux Land Blood Bank, Special Olympics, West Central Iowa Sheltered Workshop (Wesco), Schleswig Enterprise (Community Building), Schleswig Business Club, Schleswig Walking Trail, Immanuel Lutheran Preschool, Schleswig City Park, Crossroads of Crawford County, and Schleswig Youth Programs which include: Girl Scouts, Brownies, 4-H, Soccer, Baseball, Softball, Basketball & Volleyball.



## **Schleswig Enterprise Board** (Volunteer Opportunity; Donor Opportunity)

This Board runs the Schleswig community building, which is a huge asset to our community. It is fully powered by volunteers from the community. A captain and potential volunteers are designated for each month. Any event scheduled for that month would be served by those workers for that specific month. It is a great way to have fun, enjoy the entertainment at no charge, and get to know the community while serving! To get on a volunteer list, call Lila Bubke at 712-269-4969.

Fundraising for building maintenance and improvements is ongoing, and donations are always welcome & appreciated!

## Schleswig Wine & Bier Club



Meets once a month at different sites throughout western Iowa. We just held our 42nd Annual Wine contest on Oct. 21st & 22nd. 2017 was the 25th year for biers. Membership dues are \$10.00 per person per year. They publish a monthly newsletter with color pictures. The next meeting will be on November 18th at the Gold Slipper in Dunlap starting at 6:00. If anyone is interested in the club they may contact Don Thompson at 712-643-5333 or e-mail [tommytee@iowatelecom.net](mailto:tommytee@iowatelecom.net)

## Schleswig German Band

Grab a stein and enjoy the music!

The Schleswig German Band with their festive costumes and broad smiles have been the “Ambassadors” of Schleswig for over 50 years. These talented musicians lead by Nancy Bielenberg, continue to honor requests, preform in Calf Show Days parade, as well as other parades and celebrations throughout the area. Proud of their German heritage, their fun and enthusiasm playing German polkas is a real crowd pleaser.



## Schleswig Basic Fund, Inc. (Donor Opportunity)

In 1985, this endowment fund was started for the purpose of betterment to the Schleswig Community. Interest proceeds from the SBF investments are distributed annually to Schleswig community applicants whose project is voted on by members. The project must benefit the community.

Donations are welcome any time! Checks may be made to *Schleswig Basic Fund, Inc.* and left at either bank in Schleswig. Each Christmas season, SBF hosts a ‘Tree of Lights’ which is erected by the post office. Growing donations at \$5 a light in memory of loved ones light up the tree, with proceeds going directly into the fund. Contributions to the BASIC Fund ae tax deductible. It is a 501c3 organization.

## VFW & American Legion Groups



### Schleswig Veterans of Wars Post 3930

Any veteran who served overseas in a combat zone is eligible to become a member of the Post. For information, contact LaWayne Gronau at 712-269-2894 or Terry Kline at 712-269-5822.

The group meets the third Monday of the month at 7:30 P.M. in the back room of the Chrome Spur. They meet jointly with the American Legion.



Events and activities during the year include:

- Steak fry
- Soup supper
- Color Guard marching in the Schleswig Calf Show Days parade & other area parades
- Honorable flag burning
- Sponsorship of a pancake brunch in March for the community
- Decorating veteran graves at Morgan Cemetery for Memorial Day
- Conducting the Memorial Day program at Morgan Cemetery, including the color Guard in full uniform, Taps, & roll call.
- Erecting the Parade of Flags at the cemetery for Memorial Day and 4th of July

### Schleswig American Legion Post 645

Meets jointly with the VFW Post 3930 and collaborates in the same events listed above. In addition, the Legion sends one or two boys to Boys' State at Camp Dodge every summer. A veteran who serves in the military is eligible for membership with some date exclusions. National Guard or Air Guard members may also be eligible. For more information contact Richard Hanlin at 712-269-6325 or Dick Fredericks at 712-676-3948.



## **Schleswig Veterans of Foreign Wars Auxiliary 3930**

Ladies Auxiliary members are: wives, widows, mothers, foster and stepmothers, grandmothers, daughters, granddaughters, foster and stepdaughters, sisters, half-sisters, foster and stepsisters of those who served in the U.S. Armed Forces in combat overseas and who were or are eligible for the Veterans of Foreign Wars.

The Auxiliary meets the second Monday of the month in the back room of the Chrome Spur in uptown Schleswig. Exceptions include May when they meet at 6:30 for a Salad Bar and December when they hold a Christmas Party, and there is no meeting in January.

In addition to helping in the VFW and American Legion events, the ladies keep busy doing many acts of patriotism:

- Valentines are sent to veterans at the VA Hospital in Omaha
- Donation of new flags annually
- Sponsorship of a Pillow Cleaning event every other year
- Presentation to Schleswig 5th graders every May about Loyalty Day & Flag etiquette
- Decoration of members' graves at Morgan Cemetery for Memorial Day
- Sending letters to congressmen in support of veteran's affairs
- Hosting a Bakeless Bake Sale fundraiser
- Decorating the Hoffman Insurance window in a patriotic theme for our town celebration
- Poppy sales during Calf Days
- Collection of donations for TAP & Veterans Moving Forward



## **Youth Recreation (Volunteer Opportunity)**

Schleswig Youth Rec, Inc. is a 501c 3 non-profit. There are 5 very active Board Members: Danae Petersen, President; Brian Sieren, Vice President; Lisa Westphalen, Treasurer; Angela Wiebers, Secretary; & Amanda Bruhn.

the Rec Program provides the following sports:

Volleyball for girls in grades 3-6 (September-October)

Basketball for boys and girls in grades 4-6 ( November-February)

Soccer, Baseball, T-ball, & softball for boys and girls in grades TK-6th.



All sports are coached by Volunteers. There are concessions during each season that are also run by volunteers. They are in the process of giving our outdoor complex a face lift and are in need of grant money, donations and volunteers!

You can find them on Facebook: SchleswigYouthRec or email [schleswigyouthrec@gmail.com](mailto:schleswigyouthrec@gmail.com)

## 4-H—Schleswig Sharks & Clover Kids (Volunteer Opportunity)

The local 4-H club in Schleswig, called the Schleswig Sharks, has been in existence since 1996. It is made up of youth in grades 4<sup>th</sup> through 12<sup>th</sup>. 4-H is part of the Iowa State University with a local Extension Office in every county in Iowa. The Crawford County Extension Office is located at 35 South Main street in Denison. The professional staff there work with youth and adult volunteers to carry out hands-on learning experiences.



As a 4-H member, the youth have the opportunity to make new friends, learn to be leaders, practice citizenship, build communication skills, develop decision-making skills, and have lots of fun! There are more than 45 project areas for the 4-H kids to explore and many of the members enter their completed projects at the Crawford County Fair towards the end of July.

The Schleswig Sharks 4-H Club meets the second Sunday of each month, except in January. New members are welcome anytime!

**Schleswig Clover Kids** is a fun 4-H program children in kindergarten through third meet the second Thursday of each month at School. The overall purpose of the Iowa 4-H foster the development of life skills that are cognitive, social, emotional, and physical kindergarten through third graders by providing a unique, age-appropriate educational opportunity.



specifically designed for grade. The Clover Kids the Schleswig Community Clover Kids program is to essential for the maturation of

In order to provide a high-quality learning experience, the Clover Kids program is designed to be continuous and long-term. For this reason, Clover Kids groups meet on a regular basis. In addition to Clover Kids, the Iowa 4-H program offers a variety of experiences and activities that children in kindergarten through third grade are eligible to participate in.



## Boy Scouts of America (Volunteer Opportunity)

While at this time there is not Boy Scout troop in Schleswig, the community is invested in the Scouting program and boys interested in scouting may contact Christy Welch @ 712-263-8532 for information on Troop 0049. This troop currently holds meetings at Our Savior Lutheran Church in Denison, IA.

## Girl Scouts (Volunteer Opportunity)

Girl Scouting builds girls of courage, confidence, and character, who make the world a better place!

Girls interested may contact Shandi Steinkuehler 676-2237.





# Community Facilities & Services



## **Schleswig Community School (K-8) (Volunteer Opportunity)**

The Schleswig Community School is a small, rural, school in the Dension-Schleswig Community School District. The school reflects the strong family culture of the community. Education has always been a very important aspect to the families living in Schleswig, and the community has always supported the school financially as well as having community participation in school events. The achievement levels of students attending the Schleswig Community School rank in the upper brackets nationally. There is great pride by faculty and community members, as well as students, in the success of those who attend our school.

The teaching staff has 20 teachers. There are also several educational aides that assist in classrooms. Aides assist the teachers with reading, math, and other core content subjects to ensure mastery of skills.

There are 25 support staff members that make our school efficient and very attractive. The administration works as a liaison between the community and the staff to keep the school a truly “community” school.

The Schleswig Community School provides a learning climate where each student has the opportunity to realize and achieve their potential through the mastery of relevant skills.

## **City Park**

Schleswig's largest park is approximately four acres in size and includes a swimming pool, basketball court, ball diamond, air-conditioned shelter house (call the City Clerk to rent the shelter house), and an improved campground. Schleswig has two additional smaller parks with a playground area.

Schleswig also has a Walking Trail with an Arboretum.





## Schleswig Community Building (Volunteer Opportunity; Donor Opportunity)

The Enterprise Board (nonprofit) runs the community building, which is managed by Tim & Lila Bubke. Weddings, dances, special events, & community meals or fundraisers are typical events, with the upstairs holding approx. 350 and the lower level holding approximately 125 comfortably. Contact Lila Bubke to inquire about making reservations, 712-269-4969.

## Schleswig Community Golf Course

The Schleswig Golf Course is 9-hole golf course located in the heart of Schleswig. This par 35 course is great for all skill levels of golfers and has been a great addition to the Schleswig community since 1966.

Join us at our newly built clubhouse for all kinds of events open to the public including; breakfasts, Mexican night, golf tournaments and lots of fun special events scheduled throughout the entire year.

You will find the Family, Single, & Student memberships are by far the lowest in the area. They offer cart rental, drinks, and snacks to make your golf outing enjoyable.



The course is open April 1<sup>st</sup> to October 15<sup>th</sup>. We encourage you to come and say hello to the friendly staff and enjoy all that the Schleswig Golf Course has to offer you, your family, and friends!

If you have any questions, please feel free to call the clubhouse at 676-3343.

## Schleswig Public Library (Volunteer Opportunity)

Communication, entertainment, and information are provided to the Schleswig community through a multi-media approach including books, audio books and magazines available for check out. Computers, X box, tablets, and smart TVs to patrons for use.

Throughout the year there are several speaker programs, and there is a summer reading program each summer, as well as children's programs a few times a year. The library director is Amy Hoffmeier, and the library assistant is Marlene Fredericks. They look forward to new patrons and are ready to help with any need finding library items.



**Schleswig Community Swimming Pool** The Schleswig pool is located at City Park between 6<sup>th</sup> and 8<sup>th</sup> street on Birch Ave. We have a main pool that is 10 feet at the deep end and 3 feet at the shallow. There are two spring boards, and a water slide. We also have a separate wading pool that is 2 ½ feet deep. The main pool is heated.

**Swimming Season:** The pool is open during the school summer break, generally from the last week of May to the 3<sup>rd</sup> week of August.

**Swimming Lessons:** We offer Red Cross Certified swimming lessons. Usually around the end of June or the first part of July. This is a two-week 10 session course and costs \$30.00. Private lessons are also available all-season long. The cost of the lessons is set by our certified Water Safety Instructors.



**Water Aerobics:** Classes are held Monday through Friday from 8:00 AM to 9:00 AM.

**Adult only swimming:** We offer quite relaxing times for adults to swim and soak. Monday through Friday 8:00 AM to 9:00 AM (during Water Aerobics). And Monday, Wednesday, Friday, and Saturday 5:00 PM to 6:00 PM

**All Swim:** Every Day of the Season 1:00 PM to 5:00 PM

**Evening Swim:** Monday through Friday 6:00 PM to 8:30 PM and Sunday 6:00 PM to 8:00PM

**Concessions:** Our Concession stand is open during All Swim and Evening Swim times. We offer various snacks, candies, chips, and drinks. No hot food.

**Admission:** is required for all activities and sessions except for swimming lessons.

Our staff is dedicated to providing a safe, clean, family-oriented place for summer fun and relaxation. We are strictly smoke, alcohol and harassment free. COME JOIN US!

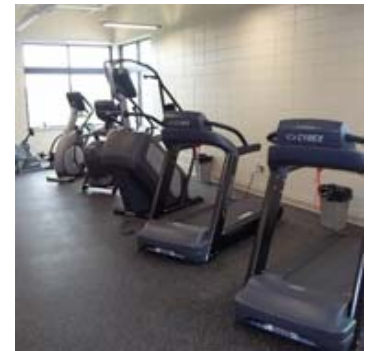
## Schleswig Community Fitness Center

Residents of the Schleswig school district may use the facility after taking a basic training session and paying a one-time \$50 charge for a key.

The facility is open to the public from 5 a.m. to 10 p.m. daily, including weekends.

When the gymnasium is set up for community use, a basketball court will be available on one side and a volleyball net will be set up on the other side during the fall, he said. Members of the public will have to bring a basketball or volleyball to use at the gym.

The fitness room has internet-connected exercise bikes that can be set up to track users' usage or to join in competitions through the machine. Treadmills, a stair climber, an arc trainer, elliptical machines, a strength training apparatus, a Smith press, and racks of dumbbells and kettle bells are available. The gym also has a track with an athletic floor for indoor walking; 11 laps equal one mile.



Residents of the school district may pick up an application for a key at the school, from local businesses or online at [schleswig.k12.ia.us](http://schleswig.k12.ia.us).

## Schleswig Post Office



Contact Number: 712-676-3310

### Hours:

Monday - Friday 8:00am - 12:30pm, 1:00pm - 2:30pm  
Saturday 8:00am - 9:30am  
Sunday Closed

Lobby is open 24 hrs.

## Schleswig City Hall & City Council

The City Council has five Council members that are elected to four-year terms and the mayor is also elected to a four-year term. City Council Meetings are held on the second Monday of each month at 7:00 p.m. in Council Chambers at City Hall. By Statute, the agenda for each Council Meeting is posted at City Hall.



111 2nd Street  
Schleswig, IA 51461

**Phone:** 712-676-3361    **Email:** schleswigclerk@iowatelecom.net  
**City Clerk:** Kris Kluender

## Schleswig Volunteer Fire & First Responder Department

[\(Volunteer Opportunity; Donor Opportunity\)](#)

This community emergency service depends on trained volunteers for earliest response to fire or medical emergency. Fire fighter coursework is required of all volunteer firefighters and First Responder training is required for any who go to emergency sites.



Fundraising is a crucial part to the success of the department, as new equipment and costs to the department are not reimbursed another way.

During National Fire Prevention week, the first week of October, the first



department grills hotdogs and burgers at the fire station, and is available to the public for a donation. Kids can ride the firetrucks, and drawings will be held for items such as smoke detectors, extinguishers, alarms, and toys. A second fundraiser is held in November when the annual Firemen's Dance is held, including a dance, games of dice and chance, and raffle drawings for ham, turkey, and bacon. Tickets are sold by firefighters going door to door in town and asking for a donation in exchange for tickets. This is the Monday night before the event, which is usually the Friday prior to Thanksgiving. (Note, they will have sirens & lights on). You may leave donations at either bank as well. Also, a Firemen's stag is a fundraiser held in December for men.

# Community Churches

## **Immanuel Lutheran Church, LCMS**

The mission of this Lutheran Church-Missouri Synod church is “Together in Christ, we grow through the Word and Sacraments, serving our Lord and sharing His saving grace with all people”.

All are welcome to attend every Sunday for Worship at 9:00 AM followed by Sunday School and Bible Class at 10:15 a.m.

You are welcome to contact the church anytime at [immansch@iowatelecom.net](mailto:immansch@iowatelecom.net), or by calling 712-676-2235.

Website: <http://www.immanuel Schleswig.org>



A vacation Bible School event is held every summer, in addition to many family-friendly activities throughout the year. There is a youth group for high school age, as well as multiple Bible study groups and interest groups.

## **Immanuel Lutheran Preschool (Volunteer Opportunity)**

For over thirty years, Immanuel Lutheran Preschool has served families from Schleswig and surrounding areas with a faith-based preschool for 3 & 4-year-olds through a tuition program.

Classes are designed to meet the needs of each child and stimulate learning in all developmental areas; spiritual, intellectual, physical, social, and emotional.



**Statewide Voluntary Preschool Program (Voluntary Opportunity)** Starting in the 2016-2017 school year, Immanuel has partnered with the Schleswig Community School to offer a tuition free, Statewide Voluntary Preschool program. The Voluntary Preschool is available to all children

who will be four years old by September 15th.

Immanuel Lutheran Preschool & SWVPP are located in the education unit of Immanuel Lutheran Church at the corner of Fifth & Glad Street in Schleswig.



Leslie Gustafson is the director/lead teacher of both preschool programs. You may contact the church office at 676-2235 or email the preschool at [immanuel Schleswig@gmail.com](mailto:immanuel Schleswig@gmail.com) for more information

## **United Church of Christ**

UCC is a Protestant congregation that values the Bible. They believe that as they read the Bible, they need to recognize its complexity, inviting the Holy Spirit to offer guidance. They feel God is still speaking and recognize that there may be more than one way to interpret His truth.

They strive to be ecumenical and inclusive. They believe that Jesus welcomed all people and that the one who judges is not ourselves but our God. True to this belief, all are welcome to the table when they celebrate the Sacrament of Holy Communion.



You are invited to join them as they walk with Jesus, worship God, and serve His world. Everyone is welcome! They can be contacted at 712-676-3917 or you can visit their website at <http://www.uccschleswig.org> for all the service information.

A vacation Bible School event is held every summer, in addition to many family-friendly activities throughout the year. There is a youth group for high school age, as well as multiple Bible study groups and interest groups.

## **Community Services & Activities** (Volunteer Opportunity)

### **Schleswig Community Easter Egg Hunt**

Usually held the Sunday before Easter



### **Schleswig Calf Show Days** (Called Schleswig Calf Show

Days because in the past a 5-calf competition occurred and featured the show calves prior to a large sale.)



Usually held second Friday-Saturday in September.

Includes Craft show, parade, chicken dinner by Immanuel Lutheran Ladies Aid, raffle drawings, bingo, walk/run, softball, carnival rides and games, and dance/music or special events in the evening on Saturday, and Sunday morning pancake breakfast.

Information and details can be found at the post office on the public bulletin board, bank bulletin boards, Facebook 'You Know You are from Schleswig When', or the Denison Newspaper or Mapleton Press.

**Schleswig Santa Claus Days and Craft Show** Santa Claus will be in the lower level handing out goodies and on the upper level will be a Craft show with lots of vendors and crafters. Great place to get Christmas shopping done!.



**City Wide Garage Sales** Typically, city-wide garage sales are held the last weekend in April & September. Usually held Thursday through Saturday, and every participant can set their own hours. Flyers will be posted in the banks, post office, and Schleswig Facebook page.

### **Garbage Pickup**

Thursdays (unless a holiday falls on Thursday, and in case of snow days earlier in the week, then pick-up is on Friday)

## Meals on Wheels (Volunteer Opportunity)

Each Tuesday & Thursday, Meals on Wheels is delivered to Schleswig by volunteers. All seniors over age 60 are eligible for Meals on Wheels, as well as a person who is shut-in AND their caretaker.

Suggested cost per meal is \$3.50-\$5.50, but any amount is accepted. The meals are made fresh in Denison at the Senior Center and delivered hot to your door. Meals on Wheels is federally funded by Elderbridge and is **NOT** income-based.

Some simple paperwork must be completed to qualify, which is about physical /nutritional needs that Elderbridge requires. Crossroads of Crawford County sponsors the program for Schleswig, and you can call them at 712-393-4673 to set up a time and they will help you complete the few pages of paperwork and give further details.

## Meeting Rooms

There are several options available for meetings:

Library (free for public meeting) Contact at 676-3470 to schedule

Community Building – Contact at 676-3913 to schedule

United Bank Iowa (free for public meeting) Contact at 676-3606 to schedule

Bank Iowa (free for public meeting) Contact at 676-3321 to schedule

## Crossroads of Crawford County (Volunteer Opportunity; Donor Opportunity)



Crossroads is a 501c3 charitable organization that connects with community families, agencies, and churches of all Christian denominations. The outreach offers information, referral assistance, and mentoring for family and life issues of all kinds, and for all ages. The

intentional outreach focus is all of Crawford County, though they will serve families from anywhere who come to them.

While the main office is located at 3707 Timberline Drive in Denison, Crossroads has grown stronger and more quickly in Schleswig its first two years, as the director, Janette Clausen, and her husband are from Schleswig. Crossroads has experienced great support from the Schleswig Community.

Basic resourcing and supportive services are offered at no fee in order to be accessible and approachable to all regardless of their situation. In order to provide this outreach, we rely on financial support from donors within the community who believe in our mission and want to help.

In addition to donor support, Crossroads is always seeking people to partner with the community-enhancing goals through becoming members, volunteers, staff, and board members.

Contributions to Crossroads of Crawford County are tax deductible.